



metkon
Technology behind Specimen



CONSUMABLES FOR MOUNTING





CONSUMABLES FOR MOUNTING

After cutting the specimen the next step is mounting. The aim of mounting is to handle small or odd shaped specimens and to protect fragile materials, thin layers or coating during preparation as well as to provide good edge retention.

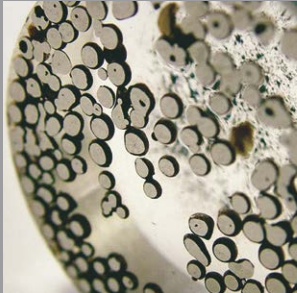
Mounting produces specimens with uniform size so that it is easier to handle in automatic holders for further preparation steps.

MOUNTING
















HOT MOUNTING

The most important properties of a hot mounting compound are; Hardness, Shrinkage and Viscosity.

The Hardness of the compound should match the hardness of the specimen in order to avoid uneven abrasion during grinding.
If the shrinkage during curing is large, a gap between the specimen and the mount will occur and edge will not be adequately protected.
Viscosity is important to reach to all areas.



HOT MOUNTING RESINS

Order No	Code	Hot Mounting Resins	Quantity	Color	Comments
29-001	BAK-B	Black Phenolic Powder	1 kg		Standart examination of all materals Low shrinkage Heating: upto 180 C
29-001/10	BAK-B	Black Phenolic Powder	10 kgs		Standart examination of all materals Low shrinkage Heating: upto 180 C
29-001/20	BAK-B	Black Phenolic Powder	20 kgs		Standart examination of all materals Low shrinkage Heating: upto 180 C
29-002	BAK-R	Red Phenolic Powder	1 kg		Standart examination of all materals Low shrinkage Heating: upto 180 C
29-002/10	BAK-R	Red Phenolic Powder	10 kgs		Standart examination of all materals Low shrinkage Heating: upto 180 C
29-002/20	BAK-R	Red Phenolic Powder	20 kgs		Standart examination of all materals Low shrinkage Heating: upto 180 C
29-010	NET	Transparent Acrylic Powder	1 kg		Standart examination of all materals. Perfectly transparent
29-010/10	NET	Transparent Acrylic Powder	10 kgs		Standart examination of all materals. Perfectly transparent
29-011	EPO	Epoxy, Hard	1 kg		Examination of edges surface. Hard with very low shrinkage
29-011/10	EPO	Epoxy, Hard	10 kgs		Examination of edges surface. Hard with very low shrinkage
29-012	DAP	Diallyphtalat	1 kg		Examination of edges surface. (Coating, deposits, thermal, treatment)
29-012/10	DAP	Diallyphtalat	10 kgs		Examination of edges surface. (Coating, deposits, thermal, treatment)
29-014	DAP ECO	Diallyphtalat	1 kg		Examination of edges surface. (Coating, deposits, thermal, treatment)
29-014/10	DAP ECO	Diallyphtalat	10 kgs		Examination of edges surface. (Coating, deposits, thermal, treatment)
29-013	CON	Conductive Bakelite powder	0.5 kg		SEM examination of all materials
29-099	SMOOTH	Mould Release Spray Can	400 ml		-



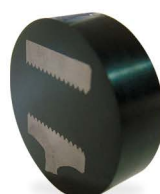
29-001 BAK-B



29-002 BAK-R



29-010 NET



29-011 EPO



29-012 DAP



29-013 CON

MOUNTING

COLD MOUNTING

Cold mounting is preferred for samples which are sensitive to damage from heat and pressure (like coatings, PCB, etc.) Cold mounting resins are easy to use.

DMT Acrylic cold mounting resins

- Very fast cure time
- It requires mixing in the ratio 2:1, powder to liquid. The mix is then poured into a mould and allowed to set.

EPOCOLD Epoxy cold mounting resins

- Better results in good edge protection.
- Low shrinkage and moderate hardness.



COLD MOUNTING

Mounting Materials	Curing Time	Compounds	Mixing Ratio Volume	Mixing Time	Peak Temperature	Color
EPOCOLD	8 Hour	Two Liquids	Resin: 5 Part; Hardener: 1 Part	3 Min.	40-60°C	Clear, Transparent
DMT 20	10 Min.	Powder/Liquid	Resin: 2 Part; Hardener: 1 Part	4-5 Min.	80-87°C	Semi Transparent
DMT 35	5 Min.	Powder/Liquid	Resin: 2 Part; Hardener: 1 Part	2-3 Min.	75-80°C	Light Green, Black
DMT CON	18 Min.	Powder/Liquid	Resin: 1 Part; Hardener: 1 Part	5 Min.	100-106°C	Black
DMT ACE	6 Min.	Powder/Liquid	Resin: 2 Part; Hardener: 1 Part	6 Min.	82-88°C	Green, Transparent

DMT

Acrylic Cold Mounting Resins

Order No	Code	Cold Mounting Resins	Type	Quantity
29-501	DMT 35	Powder	Acrylic	1000 gr
29-502	DMT 35	Fluid	Acrylic	500 ml
29-511	DMT 20	Powder (Transparent)	Acrylic	1000 gr
29-512	DMT 20	Fluid (Transparent)	Acrylic	500 ml
29-513	DMT CON	Powder	Acrylic	500 gr
29-514	DMT CON	Fluid	Acrylic	500 ml
29-515	DMT ACE	Powder	Acrylic	1000 gr
29-516	DMT ACE	Fluid	Acrylic	500 ml

EPOCOLD

Epoxy Cold Mounting Resins

Order No	Code	Cold Mounting Resins
29-506	EPOCOLD -H	Epoxy Hardener (200 gr)
29-505	EPOCOLD -R	Epoxy Resin (2x500 gr)



EPOCOLD



DMT 20

ACCESSORIES

Order No	Descriptions Fluid
29-551	Spatulas, (100 pcs)
29-552	Mixing Beakers, (10 pcs)
29-553-01	Embedding Form, ø 25 mm (5 pcs)
29-554-01	Embedding Form, ø 30 mm (5 pcs)
29-555-01	Embedding Form, ø 40 mm (5 pcs)
29-556-01	Embedding Form, ø 50 mm (5 pcs)
29-601	Stainless steel clips (100 pcs)
29-602	Plastic clips (100 pcs)
29-603	Plastic multi-clips for 5 specimens (50 pcs)



DMT 35



DMT ACE



DMT CON



┌

Distributor:

└

CNS-18-01