

Manifolds MB

Product description



Manifold MB is used for connection of hydraulic actuators to the distributing main of oil. It secures continuous increase and decrease of pressure with adjustable time constant. Increase of pressure runs always with limited flow of pressure oil. The main valve is opened before achieving of nominal pressure. For adjustment works on testing object mode with limited flow and lowered pressure of oil is used. The main valve is not opened in this case.

The base of manifold is a stand, on which connection blocks are mounted. The stand is connected to the distributing main of oil (P, R, L), it contains output M and input N for control of loading frame cross beam motion and four inputs L for oil outlet from bearings of hydraulic actuators. To each connection block inputs and outputs from one hydraulic actuator (P, R) are connected. Each of connection blocks are equipped with two distributing valves and manometer.

Type identification key

MB 2 - 65 - 250 — total nominal oil flow of stand – S (l/min)
 └───┬───┬─── connection block - PB (l/min)
 └───┬───┬─── number of connectable independent channels

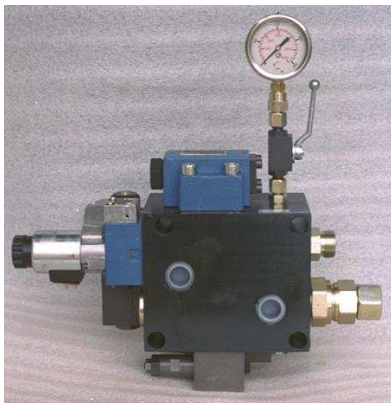


Specifications

Typ PB		PB65	PB130	PB250	PB 500
nominal pressure	MPa	28			
nominal flow	l/min	65	130	250	500
range of adjustable pressure in test prepare mode	MPa	1-10			
range of adjustable flow in test prepare mode	l/min	2-32			
current consumption – each block	A	2x1,3			
control voltage	V - DC	24			
weight of each block	kg	22	22	38	
thread P		G 3/4	G 1	G 1 1/2	SAE oder DIN 2559 flange
thread R		G 3/4	G 1	G 1 1/2	
mounting together with stand type		S250 M01 S500 M01	S 250 M01 S 500 M01	S500 M02 S 1000 M01	S 1000 M01
max. number of connectable blocks		2+2 with S250 M01 3+3 with S500 M01	1+1 with S250 M01 2+2 with S500 M01	1+1 with S500 M02 2+2 with S1000	1+1 with S 1000 M01

Stand - S -

Type	P (pressure)	R (drain)	L (output)	L (input)	M	N
S250	G 1 1/2	G 1 1/2	G 3/4	4 x G 1/2	G 1/4	G 1/4
S500	SAE or DIN 2559	SAE or DIN 2559	G 3/4	4 x G 1/2	G 1/4	G 1/4
S 1000	flange DIN 2559	flange DIN 2559	G 1	4x G3/4	G 1/4	G 1/4



reserve the right of technical changes

