

## Linear Actuators Series AG

### Product description



Hydraulic actuators series AG are plain bearing, double acting actuators, best for dynamic material and component testing at high piston velocities. The special plain bearings ensures low friction operation up the nominal load of the actuators. The system pressure for the series AG actuators is 280 bar. The actuator will reach its nominal load at 250 bar. The actuators have an integrated displacement transducer for measure the piston rod position.

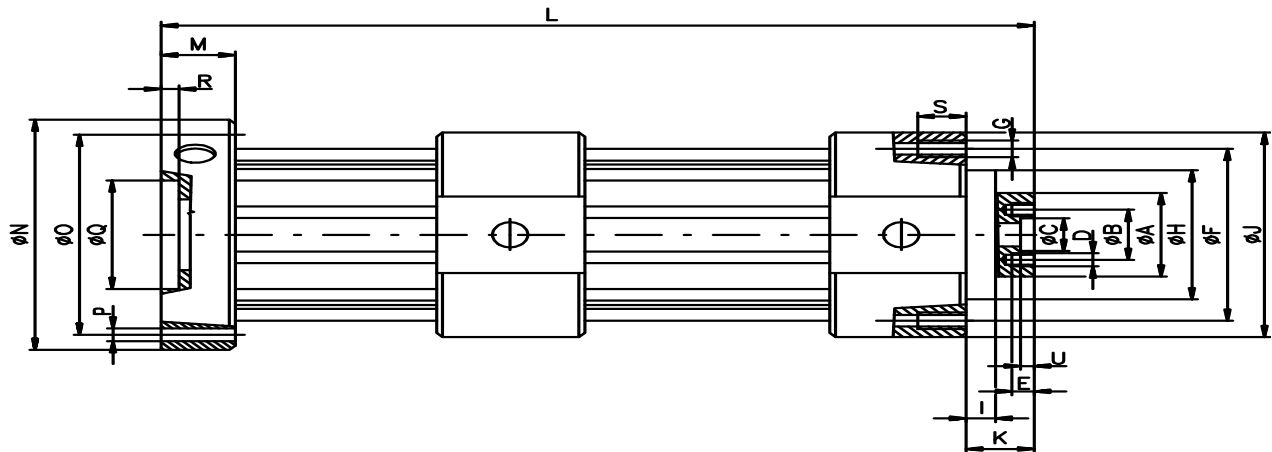
### Options

- Enlarged end cushions
- strengthened piston rod
- piston rod rotation lock
- Non standard stroke and load on request
- System pressure 210 bar

### Accessories

- Servovalves SV
- Valve plates SC
- Flushing plate
- Joints JC, JB
- Multivalves MV
- accumulators XA
- Servovalve dummy plate
- Leakage pump

## Specifications



Type		AG10,16,25	AG40,63	AG100,160	AG250	AG400	AG630	AG1000
A	mm	Ø45	Ø55	Ø80	Ø125	Ø125	Ø160	Ø200
B	mm	Ø30	Ø30	Ø45	Ø71	Ø95	Ø112	Ø117
C	mm	Ø18H7	Ø18H7	Ø18H7	Ø30H7	Ø30H7	Ø50H7	Ø50H7
D	mm	8xM6	8xM6	8xM10	8xM16	8xM20	8xM24	8xM24
E	mm	40	40	65	130	150	180	40
F	mm	80	100	160	224	224	280	355
G	mm	8xM8	6xM10	12xM10	12xM16	12xM16	12xM20	12xM24
H	mm	Ø65g6	Ø75g6	Ø125g6	Ø190g6	Ø190g6	Ø236g6	Ø300g6
I	mm	10	10	15	25	25	25	40
J	mm	Ø108	Ø140	Ø210	Ø280	Ø320	Ø400	Ø420
K	mm	40	40	50	55	55	55	60
L <sub>100</sub> Stroke	mm	428	485	585	630	690	770	790
L <sub>250</sub> Stroke	mm	728	785	885	930	990	1070	1090
L <sub>400</sub> Stroke	mm	-	1085	1185	1230	1290	1370	1390
M	mm	35	40	50	55	60	70	80
N	mm	Ø130	Ø140	Ø215	Ø285	Ø330	Ø420	Ø420
O	mm	Ø110	Ø120	Ø180	Ø245	Ø290	Ø320	Ø380
P	mm	8xØ9	6xØ11	12xØ11	12xØ17	12xØ17	12xØ22	12xØ26
Q	mm	55	55	105	105	105	105	105
R	mm	4	4	6	10	10	10	10
S	mm	16	20	20	32	32	40	40
U	mm	4	4	6	6	6	8	8
Mass ap.								
L <sub>100</sub>	kg	17	32	80/105	180	280	480	480
L <sub>250</sub>	kg	24	48	110/140	240	355	610	610
L <sub>400</sub>	kg	-	64	140/175	300	430	740	740
Allowable radiale load for extended piston rod *								
L <sub>100</sub> stroke – F <sub>Q</sub>	kN	4,5	9	16	45	70	110	110
L <sub>250</sub> stroke – F <sub>Q</sub>	kN	2,5	4,5	14	40	40	100	100
L <sub>400</sub> stroke – F <sub>Q</sub>	kN	-	3	9	35	35	85	85

Press date 18.01.2009 - Subject to change without notice